

SSFA comparison

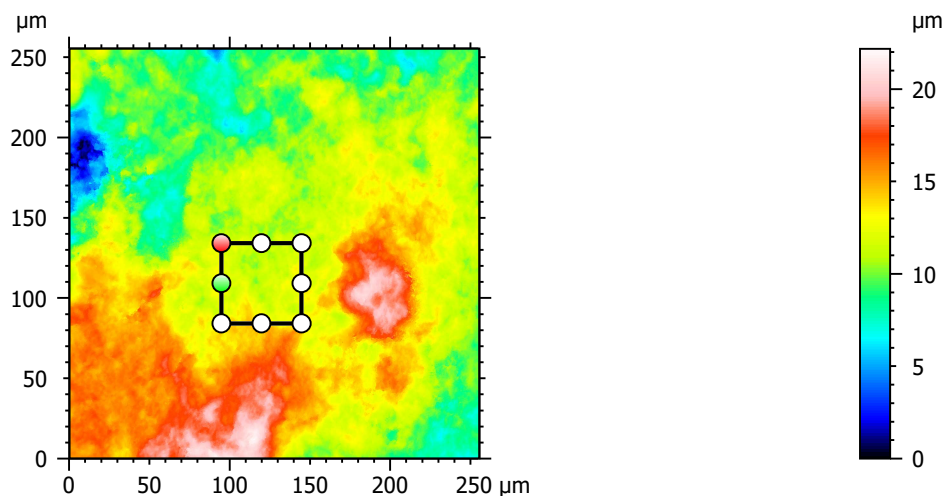
Template to process all lithic surfaces acquired with the Zeiss LSM 800 with the 50x/0.95 objective.

A. Processing

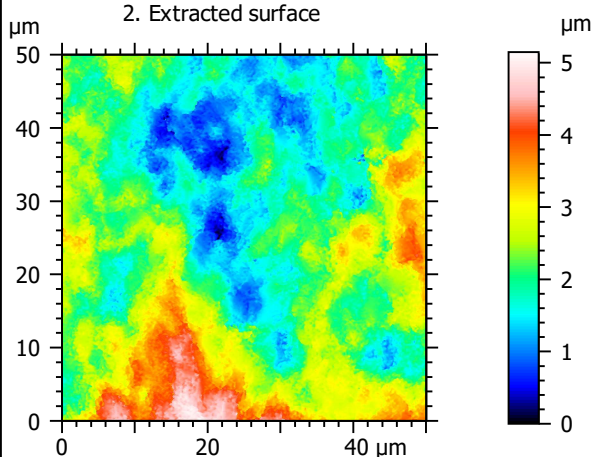
Identity card

Name:	FLT3-10_LSM_50x-0.95_20190328_Area1_Topo		
File path:	D:\Data\3Ddata\SSFA\Lithics\Original surfaces\FLT3-10_LSM_50x-0.95_20190328_Area1_Topo.sur		
Created on:	3/28/2019 3:19:32 PM		
Studiable type:	Surface		
Axis:	X		
Length:	255.5	μm	
Size:	3000	points	
Spacing:	0.08519	μm	
Axis:	Y		
Length:	255.5	μm	
Size:	3000	points	
Spacing:	0.08519	μm	
Axis:	Z		
Layer type:	Topography		
Length:	22.18	μm	
Size:	65532	digits	
Spacing:	0.0003385	μm	
NM-points ratio:	0.000 % (0 Pts)		

1. Acquired surface

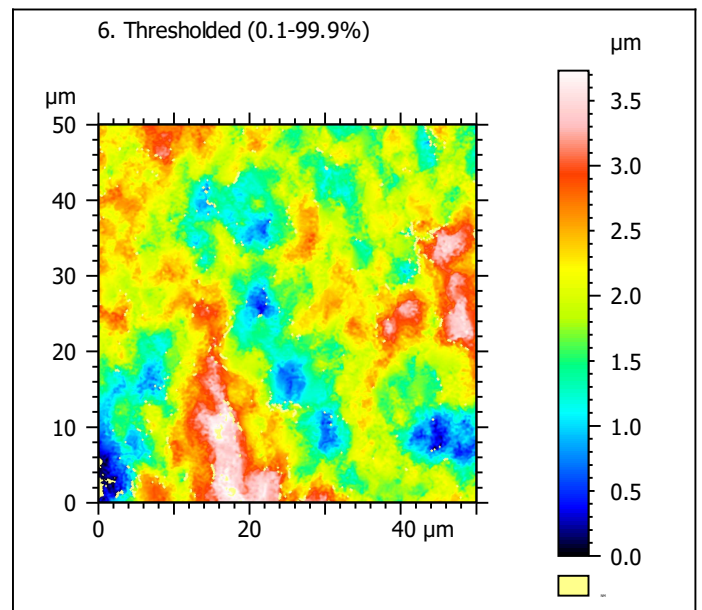
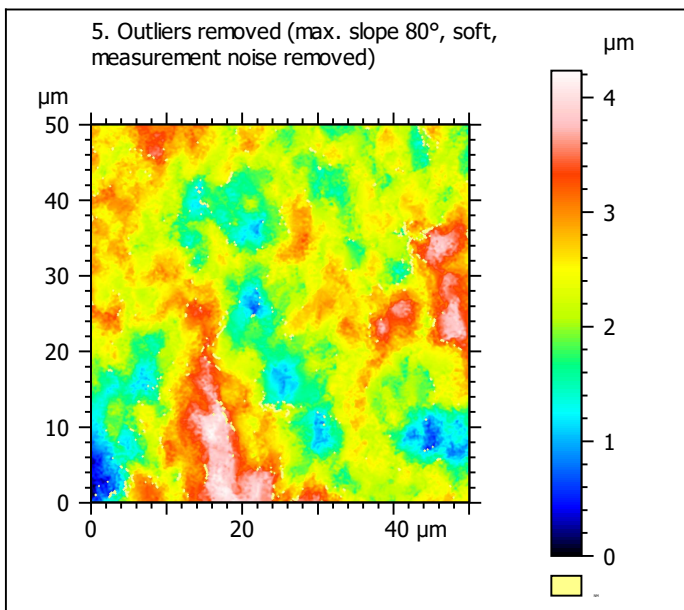
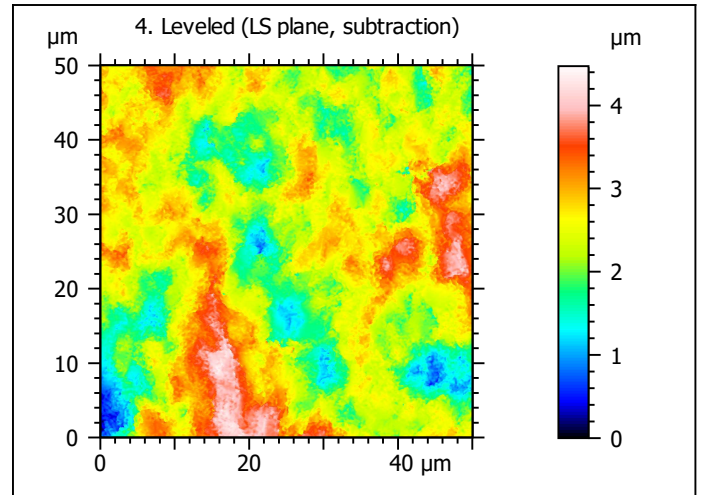
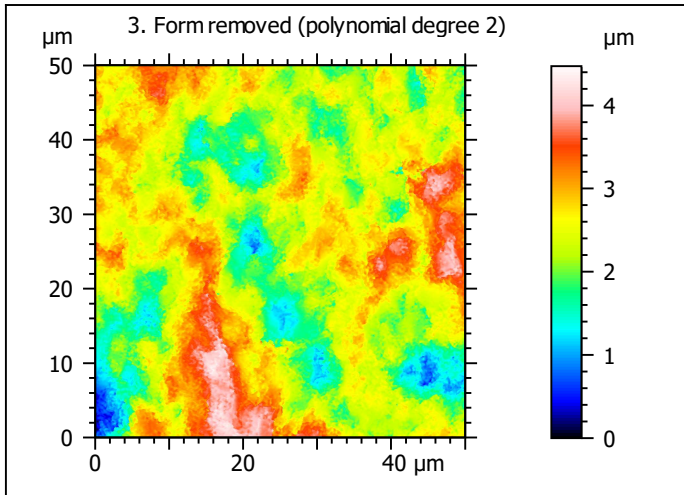


2. Extracted surface



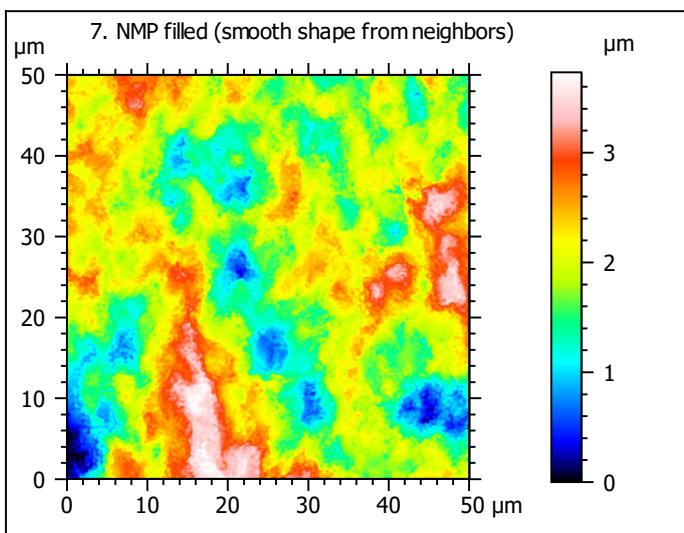
Identity card

Name:	FLT3-10_LSM_50x-0....opo > Extracted area		
Axis:	X		
Length:	50.00	μm	
Size:	588	points	
Axis:	Y		
Length:	50.00	μm	
Size:	588	points	
Axis:	Z		
Layer type:	Topography		
Length:	5.148	μm	
Size:	15211	digits	
NM-points ratio:	0.000 % (0 Pts)		

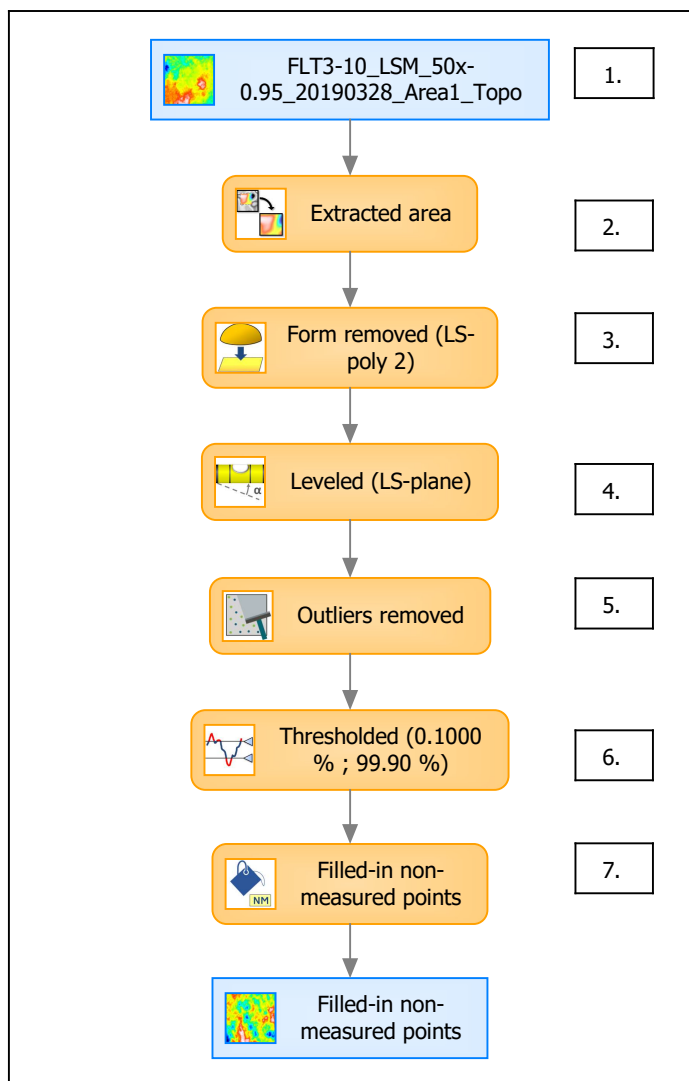


Identity card	
Name:	FLT3-10_LSM_50x-0....e) > Outliers removed
Axis:	Z
NM-points ratio:	1.571 % (5430 Pts)

Identity card	
Name:	FLT3-10_LSM_50x-0....0.1000 % ; 99.90 %)
Axis:	Z
NM-points ratio:	1.766 % (6107 Pts)



B. Summary



Identity card

Name: FLT3-10_LSM_50x-0.95_20190328_Area1_Topo > Extracted area...resholded (0.1000 % ; 99.90 %) > Filled-in non-measured points

Studiabale type: Surface

Axis: X

Length: 50.00 μm

Size: 588 points

Spacing: 0.08519 μm

Axis: Y

Length: 50.00 μm

Size: 588 points

Spacing: 0.08519 μm

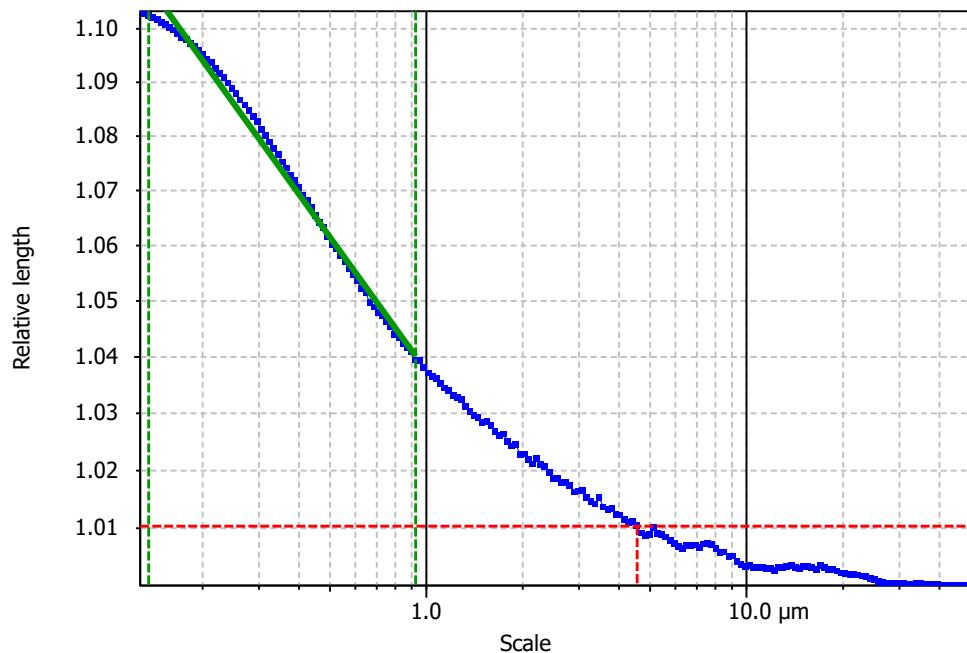
Axis: Z

Layer type: Topography

Length: 3.732 μm

Size: 11025 digits

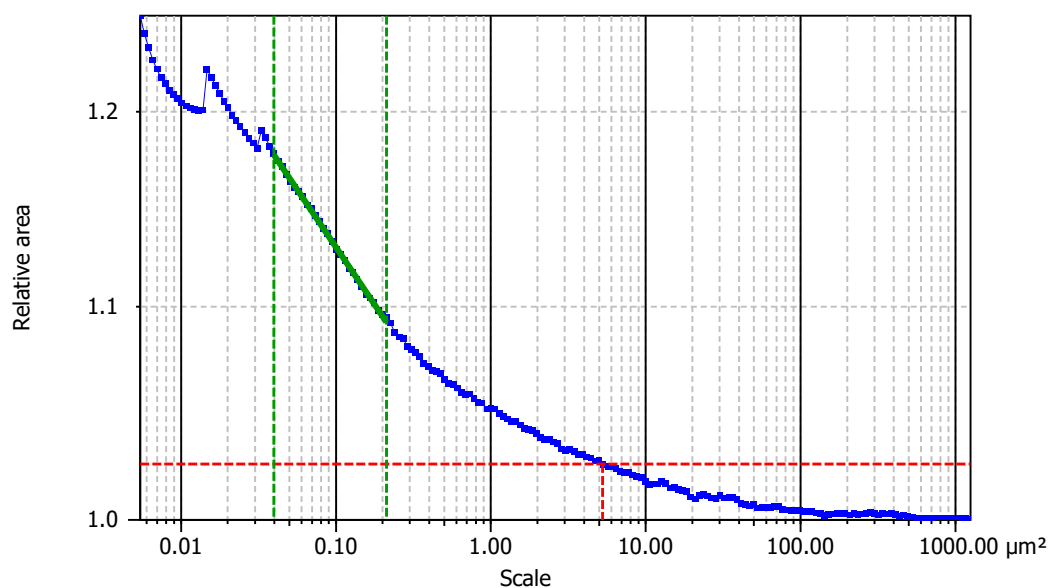
Spacing: 0.0003385 μm

**Information**

Method	Length-scale (rows)
--------	---------------------

Parameters

Parameters	Value	Unit	Comment
epLsar	0.002819		Length-scale anisotropy (Sfrax) (1.8 μm, 5°)
NewEplsar	0.01654		Length-scale anisotropy (1.8 μm, 5°)

**Information**

Method	Area-scale (four corners)
--------	---------------------------

Parameters

Parameters	Value	Unit	Comment
R ²	0.9990		Reg. coefficient R ²
Asfc	44.67		Fractal complexity
Smfc	0.1005	μm ²	Scale of max complexity
HAsfc9	0.07663		Heterogeneity of Asfc (3x3)
HAsfc81	0.2368		Heterogeneity of Asfc (9x9)